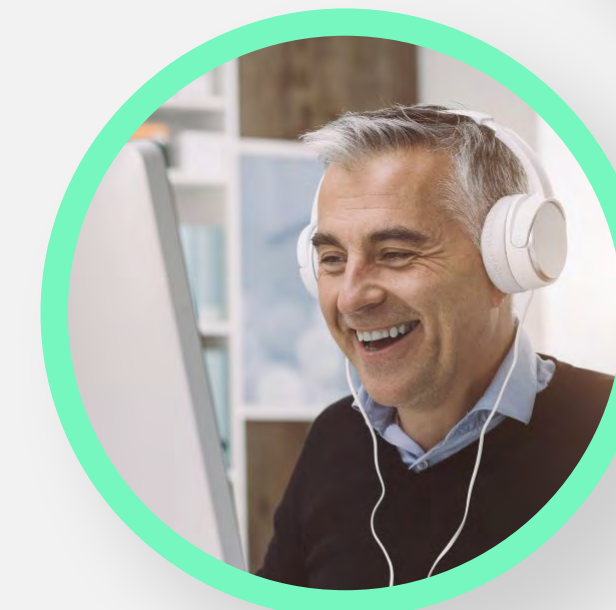
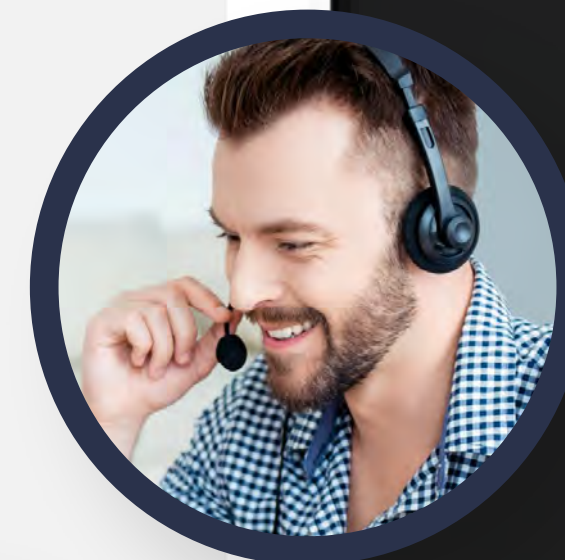
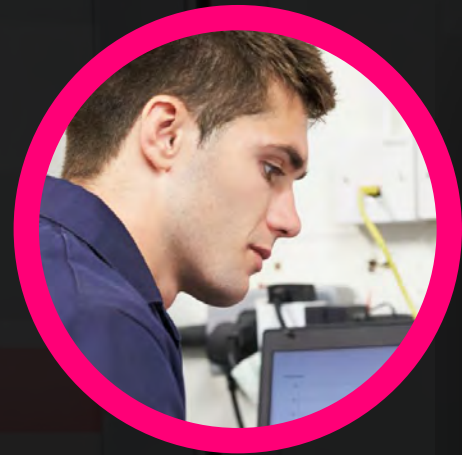


MCI Solutions presents our

# LIVE VIRTUAL CLASSROOM SUBSCRIPTION



A virtual classroom subscription service that provides **live, facilitated and highly engaging virtual classes** for your employees to enjoy in the flow of work at the convenience of their desk – wherever they may be working from!



# ADDRESSING THE NEED FOR DIVERSITY OF LEARNING MODALITIES THAT ORGANISATIONS OFFER THEIR EMPLOYEES

The virtual classroom is a more convenient and experientially optimal modality that allows your employees to select whatever course they wish to attend and complete it in 90 minutes!



60  
sessions /month  
guaranteed

- There is no doubt that the pandemic had an accelerating effect on virtual learning. However, we have been doing this for years. The increase in flexible work arrangements demand more diversity in your learning blend, given limited face to face and what some now call elearning fatigue. **The virtual classroom offers an effective, practical and economical way to provide professional development for your employees.**

# AUSTRALIA'S VIRTUAL CLASSROOM LEADERS

**13 years+**  
delivering  
virtual classes

**15,000+**  
participant  
attendances  
in 2022

**1,000+**  
sessions  
delivered  
in 2022

**70+**  
titles  
available

Relevant to  
all industries  
and sectors



# WHAT TOPICS ARE AVAILABLE?

We guarantee 60 sessions each month. The titles vary depending on popularity of topics. Your employees however can plan their schedules in advance.

These are a few of the titles:

|                                     |  |   |                                      |                              |
|-------------------------------------|--|---|--------------------------------------|------------------------------|
| Manage Conflict                     | Improve your Time Management                   | Formulas for statistical analysis                       | Mastering Macros                     |                              |
| Automation with Macros              | Negotiate like a Pro                           | Be Courageous   | Offer Extraordinary Customer Service |                              |
| Remote Leadership                   | Dashboards                                     | Office 365: Teams                                       | Lead Virtual Meetings                | Styles and Tables of Content |
| Be a great Communicator             | Pivot Tables and Pivot Charts                  | Build Resilience to Remain Effective                    | Manage Conflict                      |                              |
| Building High-Performing Teams      | Designing for the virtual Classroom (Part 1/3) | Writing Effective Emails                                |                                      |                              |
| Charts and Graphs                   | Office 365: One Drive                          | Engaging activities to bring content to life (Part 2/3) |                                      |                              |
| Animation and transition effects    | Own your career                                | Structured writing (Part 1/3)                           | Styles and Tables of Content         |                              |
| Give and Receive Feedback           | Fast formatting tips                           | Build Resilience to Remain Effective                    |                                      |                              |
| Leading with Emotional Intelligence | Solve Problems Creatively                      | Be Assertive in the Workplace                           |                                      |                              |

## BENEFITS FOR THE PARTICIPANT

- Sessions are **convenient**
- Employees can 'Learn in the flow of work'
- **Learn from anywhere**, all you need is your computer, headphones, your attention, and your participation
- The learning is **engaging and highly interactive**
- **Interact and collaborate** live with your peers from your own and other organisations
- **Plan your professional development schedule** well in advance to fit into your schedule
- Make the most of your time with the **live facilitator** – ask questions as you learn

## BENEFITS FOR THE COMPANY

- An **economical solution** to professional development that more closely aligns your investment
- Better **attendance vs cancellation** ratios
- Unparalleled **cost vs usage/uptake** ratio
- Provides a **deeper skills-building** experience for the employee
- It **boosts employee engagement** and enhances a learning culture
- Fosters a **better virtual collaboration** for hybrid teams as it serves as an extension of the virtual office
- **Practical and convenient** solution for fixed-location or disparate workforces
- **Easy to set up** and launch training solution

# SUBSCRIPTION INVESTMENT

■ The subscription is based on MCI Solutions guaranteeing the delivery of 60 Sessions (Virtual Classes) per month – every month! For the subscribing organisations, they are subscribing to a set number of seats (seats on sessions) per month based on their subscription tier (volume of seats determines tier). The sessions are open i.e. any participant from an organisation can book on an available seat.

**Please note that subscription pricing equates to up to 90% discount off RRP!**

The subscription is available in the following tiers:

| Tier   | Number of seats per month | Annual Investment | Bonus Seats for Annual Payment | Price per Seat inc bonus seats | Total No. People Trained p.a inc bonus seats |
|--------|---------------------------|-------------------|--------------------------------|--------------------------------|--|
| Tier 1 | 1000                      | \$192,000.00      | 200                            | \$13.00                        | 14400  |
| Tier 2 | 500                       | \$132,000.00      | 100                            | \$18.00                        | 7200   |
| Tier 3 | 250                       | \$96,000.00       | 35                             | \$28.00                        | 3420   |
| Tier 4 | 150                       | \$70,200.00       | 15                             | \$35.00                        | 1980   |
| Tier 5 | 100                       | \$60,000.00       | 10                             | \$45.00                        | 1320   |
| Tier 6 | 50                        | \$40,800.00       | 5                              | \$62.00                        | 660  |

### Terms and conditions:

- Subscriptions secure the set number of seats (on sessions) monthly according to the tier selected
- Fees are paid monthly but subscriptions are annual
- Licenses are non-refundable and non-transferrable
- Unutilised seats in any given month do not roll-over to the next
- Sessions are subject to availability as they are publicly scheduled. The following capacities apply
  - Professional Development Session - Max 30 participants
  - IT Session – Max 25 participants






**GET **  
**STARTED**  
**NOW!**

## HOW TO SUBSCRIBE

Getting started is as easy as the following steps:

- 1**  
Determine the suitable percentage of workforce that would attend a course in any given month
- 2**  
Choose one of the 6 tiers that would cover that volume
- 3**  
Establish your internal utilisation protocols if required
- 4**  
Commence internal marketing and communications with our complementary pre-designed templates
-   
**OFF YOU GO...**  
Your organisation is ready to dive into MCI's live virtual learning experience

 1300 768 550

 [www.mci.edu.au](http://www.mci.edu.au)

 [info@mci.edu.au](mailto:info@mci.edu.au)

 [/company/management-consultancy-international](https://www.linkedin.com/company/management-consultancy-international)

 **mci**  
solutions